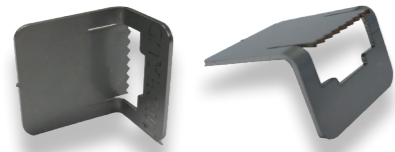


Stainless steel strap accessories

SMART buckles



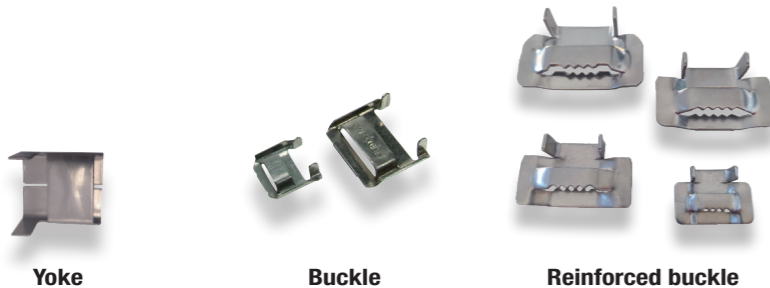
- + The SMART buckle is made of stainless steel
- + This product can be used with a pair of pliers and a hammer
- + Available in two sizes.

Application

This stainless steel buckle can be used without any special tools: a pair of pliers and a hammer are sufficient. Installation is quick and easy. It can be used to fix accessories without tensile strength such as ducts, signage, etc. on all types of poles.

| Code | Designation | Compatibility with | Weight (kg) | Sales unit |
|-----------|--|-----------------------------|-------------|------------|
| L952 - HT | SMART BUCKLES 10 AND 13 mm - 3/8" and 1/2" (x100) - WT | 10mm (3/8") and 13mm (1/2") | 0.600 | 1 |
| L953 - HT | SMART BUCKLES 16 AND 20 mm - 5/8" and 3/4" (x100) - WT | 16mm (5/8") and 20mm (3/4") | 0.800 | 1 |

Yokes and buckles

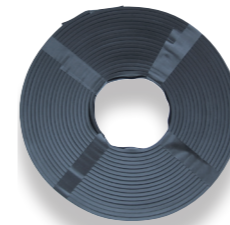


Application

These buckles are used to close the strap once it is strapped around the post.

| Code | Designation | Compatibility with | Weight (kg) | Sales unit |
|---------|---|-----------------------------|-------------|------------|
| K950 | YOKES FOR 10mm STRAP - 3/8" (x100) | 10mm (3/8") and 13mm (1/2") | 0.360 | 1 |
| K951 | YOKES FOR 20mm STRAP - 3/4" (x100) | 16mm (5/8") and 20mm (3/4") | 0.600 | 1 |
| K952 | BUCKLES FOR 10mm STRAP - 3/8" (x100) | 10mm (3/8") and 13mm (1/2") | 0.320 | 1 |
| K953 | BUCKLES FOR 20mm STRAP - 3/4" (x100) | 16mm (5/8") and 20mm (3/4") | 0.900 | 1 |
| L950 | YOKES EC FOR 10mm - 3/8" STRAP (x100) | 10mm (3/8") and 13mm (1/2") | 0.360 | 1 |
| L951 | YOKES EC FOR 20mm - 3/4" STRAP (x100) | 16mm (5/8") and 20mm (3/4") | 0.610 | 1 |
| U955-10 | REINFORCED BUCKLES FOR 10mm STRAP - 3/8" (x100) | 10mm (3/8") | 1.000 | 1 |
| U955-13 | REINFORCED BUCKLES FOR 13mm STRAP - 1/2" (x100) | 13mm (1/2") | 1.200 | 1 |
| U955-16 | REINFORCED BUCKLES FOR 16mm STRAP - 5/8" (x100) | 16mm (5/8") | 1.300 | 1 |
| U955-20 | REINFORCED BUCKLES FOR 20mm STRAP - 3/4" (x100) | 20mm (3/4") | 1.500 | 1 |

Protection tape and eyes



Protection tape



Eyes



Anti-climbing buckles

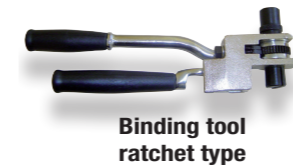
Application

This protection tape and eyes can be used for the stainless steel strap implementation. These stainless steel buckles are fixed onto the strap to prevent climbing on the pole and the fraud attempt.

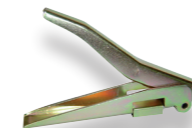
| Code | Designation | Weight (kg) | Sales unit |
|------|--|-------------|------------|
| K957 | PROTECTION TAPE FOR 10mm STRAP - 3/8" (10m length) | 0.500 | 1 |
| K964 | PROTECTION TAPE FOR 13mm STRAP - 1/2" (10m length) | 0.580 | 1 |
| K965 | PROTECTION TAPE FOR 16mm STRAP - 5/8" (10m length) | 0.610 | 1 |
| K958 | PROTECTION TAPE FOR 20mm STRAP - 3/4" (10m length) | 0.770 | 1 |
| K654 | EYES 25x25 (x100) | 1.700 | 1 |
| K655 | EYES 25x40 (x100) | 2.160 | 1 |
| K656 | EYES 25x60 (x100) | 2.820 | 1 |
| K956 | ANTI-CLIMBING STAINLESS STEEL BUCKLES (x25) | 0.580 | 1 |

Tools

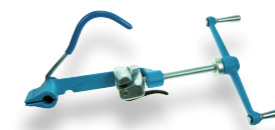
- The tools are made of non-corrosive steel.
- The carrying case with ergonomic inside trim is made of synthetic material. It includes a cutting tool, binding tool and buckles (to be ordered separately).



Binding tool ratchet type



Folding plier



Binding tool wheel type



Cutting tool



| Code | Designation | Weight (kg) | Sales unit |
|------|-------------------------------------|-------------|------------|
| K959 | BINDING TOOL WHEEL TYPE FOR STRAP | 2.500 | 1 |
| K960 | BINDING TOOL RATCHET TYPE FOR STRAP | 1.950 | 1 |
| K961 | CUTTING TOOL FOR STRAP | 0.550 | 1 |
| K963 | CARRYING CASE FOR STRAP TOOLS | 0.550 | 1 |
| K968 | STRAP FOLDING PLIER | 0.510 | 1 |